

Funding your studies

2018 entry

www.imperial.ac.uk/fees-and-funding/ug

Louise Ménard
Student Financial Support Manager



Introduction

- Cost of living in London
- Types of funding
- Scholarships
- When to apply
- Useful links



Cost of living in London



Academic Year 2017-18	Weekly (£)	39 Weeks (£)	52 Weeks (£)
Accommodation and utilities:			
➤ <i>College Halls of Residence</i>	171	6,669	-
➤ <i>Private</i>	176	6,864	9,152
Food	50	1,950	2,600
Travel	27	888	888
Personal	39	1,521	2,028
Total	£287 - £292	£11,028 - £11,223	£15,163

Types of funding



Government funding

- Tuition Fee Loan
 - » *Home & EU students*
- Maintenance Loan
 - » *Home students*



Imperial College funding

- Imperial Bursary
 - » *Home students*
- Scholarships
 - » *All students*



Government Tuition Fee Loan

Tuition Fee Loan

Imperial tuition fees =
£9,250

All Home students qualify
regardless of household
income

Paid directly to Imperial

Start repaying from April
after graduating if your
income is above £21,000

Repayment amounts
depends on your income
level, not loan level

Repayments

< £21,000: No repayments

£25,000: £30 per month

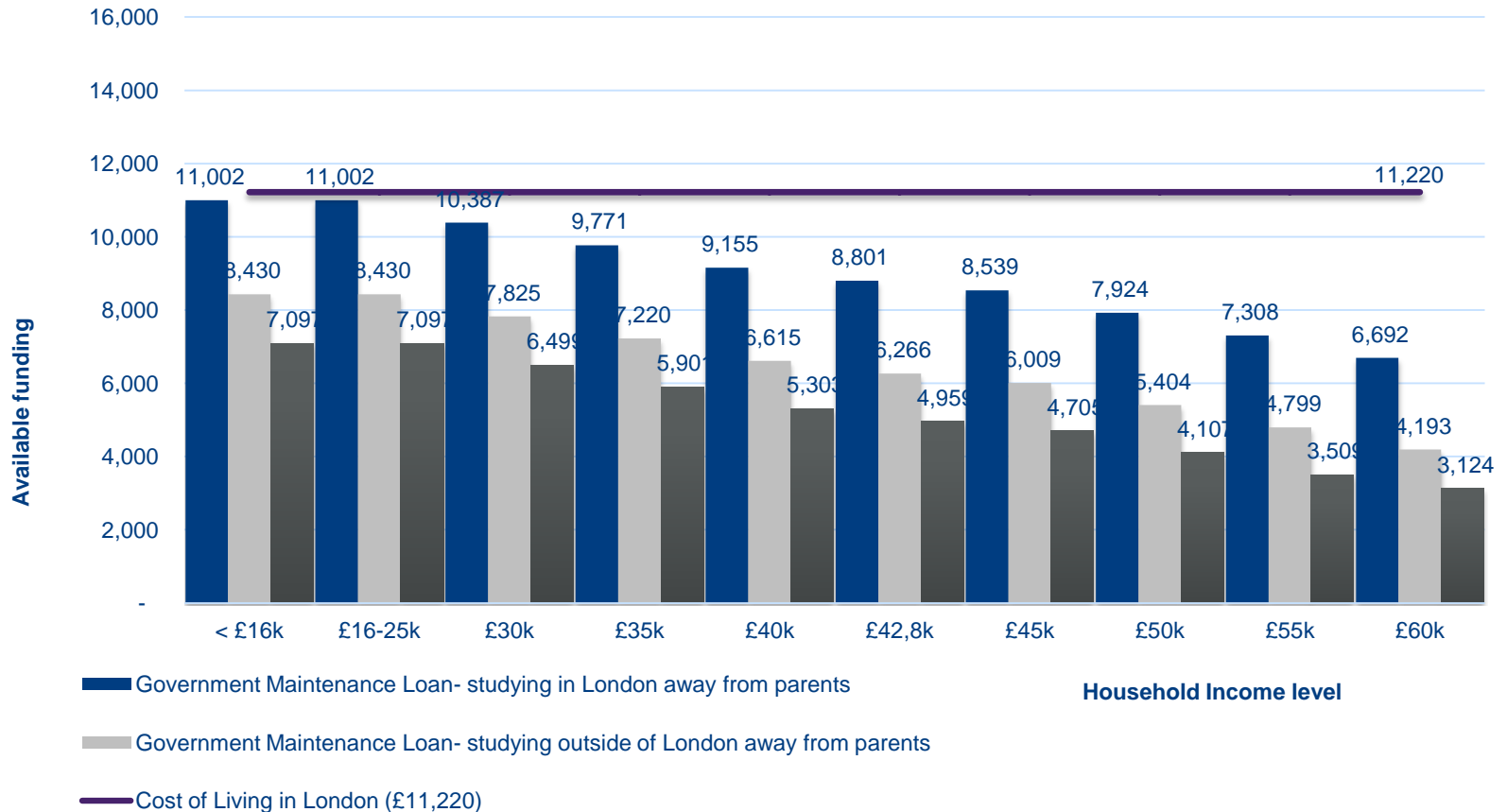
£30,000: £67 per month

£40,000: £142 per month

£50,000: £217 per month

Government Maintenance Loan

Living cost funding available per household income



Imperial Bursary 2017-18



Household Income	Imperial Bursary
£16,000 or less	£5,000
£16,001 - £50,000	£4,000
£50,001 - £55,000	£3,000
£55,001 - £60,000	£2,000

www.imperial.ac.uk/fees-and-funding/imperial-bursary

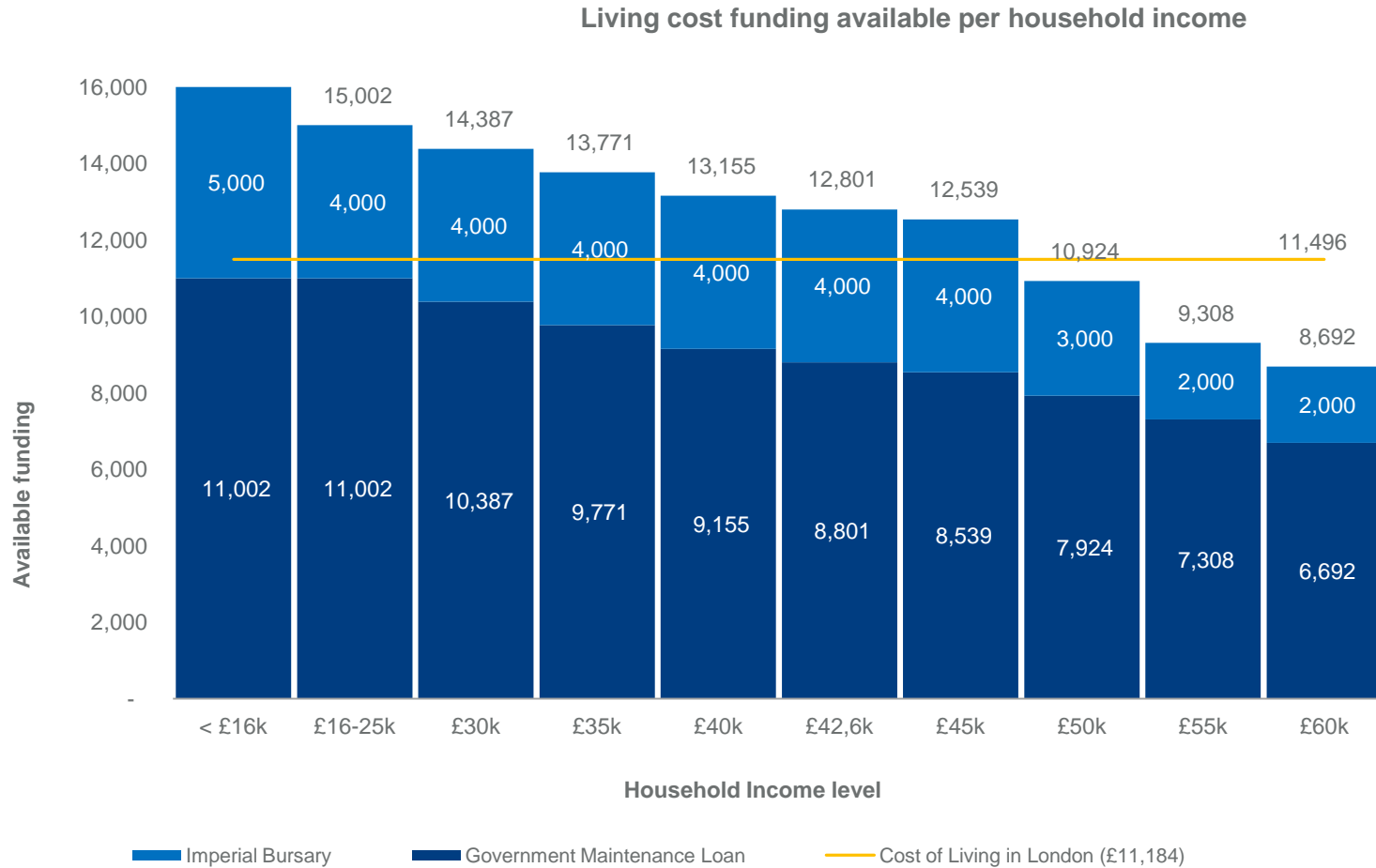
One of the most generous bursary schemes in the UK!

Funding for every year of your study!*

No other qualifying criteria!

* Income dependent and excluding repeat and NHS funded years

Total maintenance funding available by income level



How is household income assessed?

- 2018-19 applicants will be assessed on their household income for **2016-17 tax year**.
- You can also have an in- year assessment if your circumstances have changed.
- Salary, taxable state benefits, pensions, income from savings and investments & any other sources of income.
- Private pension contributions and £1,000 for every other child in university education.

How am I assessed?

What information do they use?

What can be deducted?

Medical Students

- Medical students studying 6 year MBBS courses
 - » Government loans and NHS funding
- Graduate Entry students studying 5 years
- Intercalating students transferring for one year to another university

Student Finance Calculators

- Imperial Student Funding Calculator

www.imperial.ac.uk/fees-and-funding/calculator

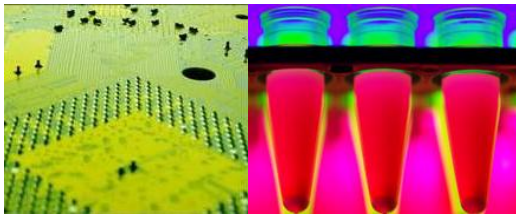
- Government Student Finance Calculator

www.gov.uk/student-finance-calculator



Scholarships

- 2018-19: £1,000,000+
- Scholarships can be awarded based on:
 - Combined financial need and academic merit
 - Solely on academic merit and potential
 - Extracurricular ability (sport, music, etc.)
- Generally
 - Between £1,500 and £20,000
 - No application forms
- Other things to know
 - Check to see if you need to apply
 - Now is not the time to be modest



When to apply for funding

October onwards



Apply to study at Imperial and start looking into how you will fund your studies

February



Apply for funding from Student Loans Company etc.

We will let you know when SLC opens for applications

May



Scholarships deadline aligns with the UCAS outstanding decisions deadline

If SLC confirms you're income by this date, you'll be considered for scholarships with a financial criteria.

August



Following A-level results, we will write to confirm what Imperial Bursary you are eligible to receive

When things don't go as planned

Student Support Fund

- A fund to help all students who are experiencing financial difficulties
- Can help with on-going living costs or emergency, one-off payments based on individual assessments
- Cannot assist with tuition fees
- You don't have to pay it back
- We can also offer interest free emergency loans



Resources

Imperial College
London

www.imperial.ac.uk/fees-and-funding/ug



www.gov.uk/student-finance



www.thestudentroom.co.uk